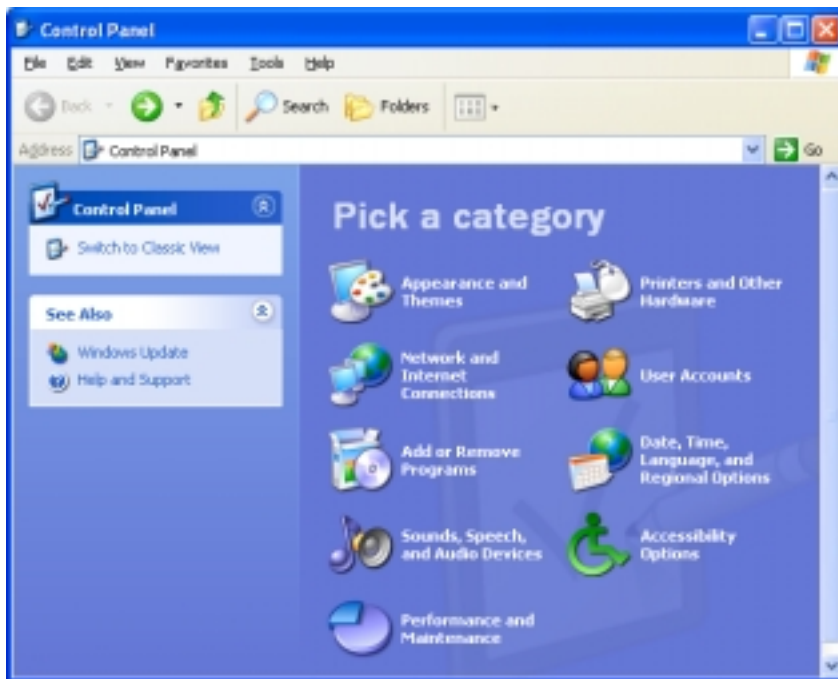
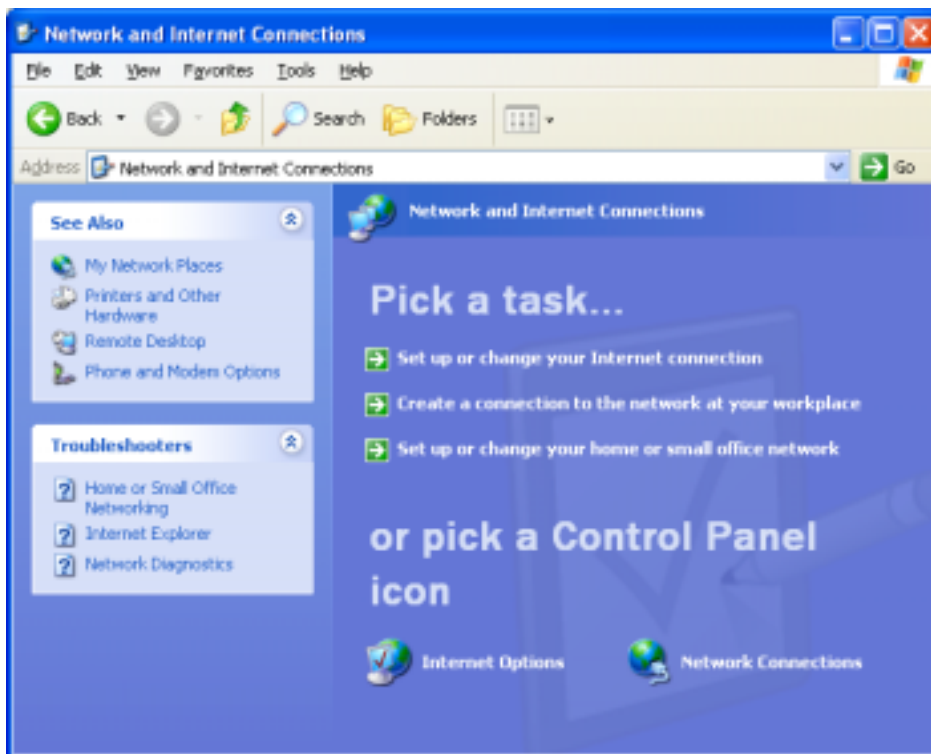


Dial-Up Instructions for Windows XP Pro

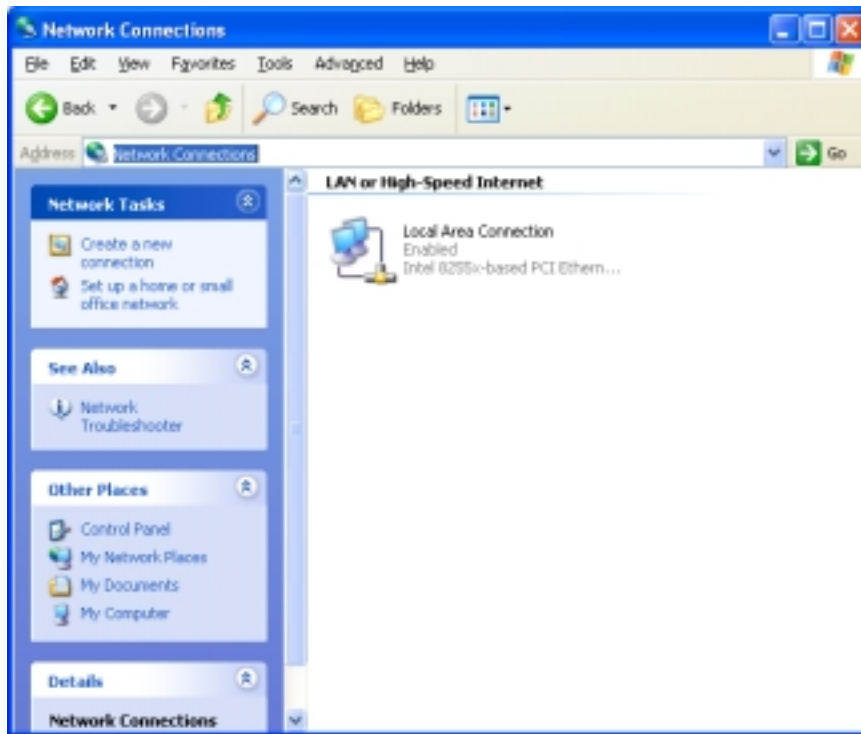
1. Open control Panel.



2. Click on “Network and Internet Connections”.



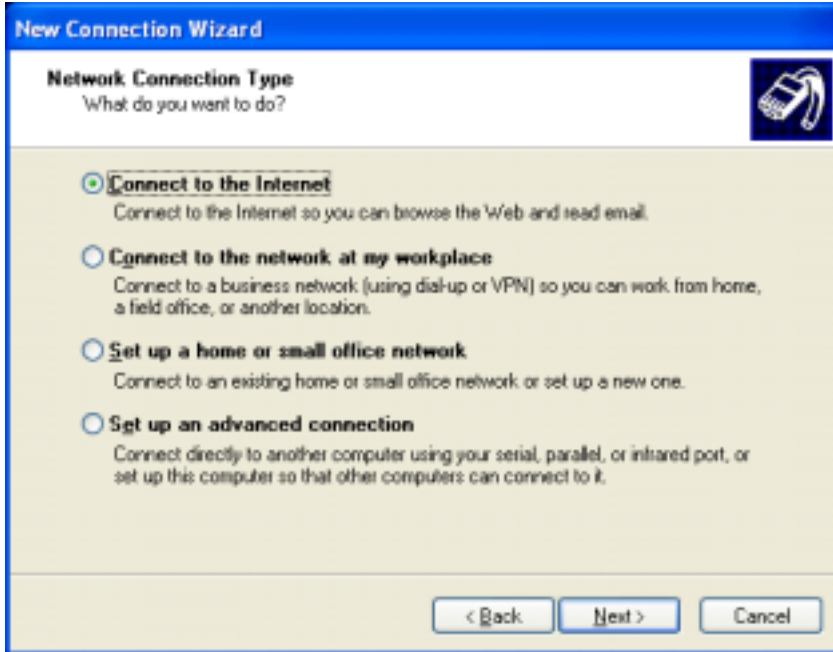
3. Click on “Network Connections”



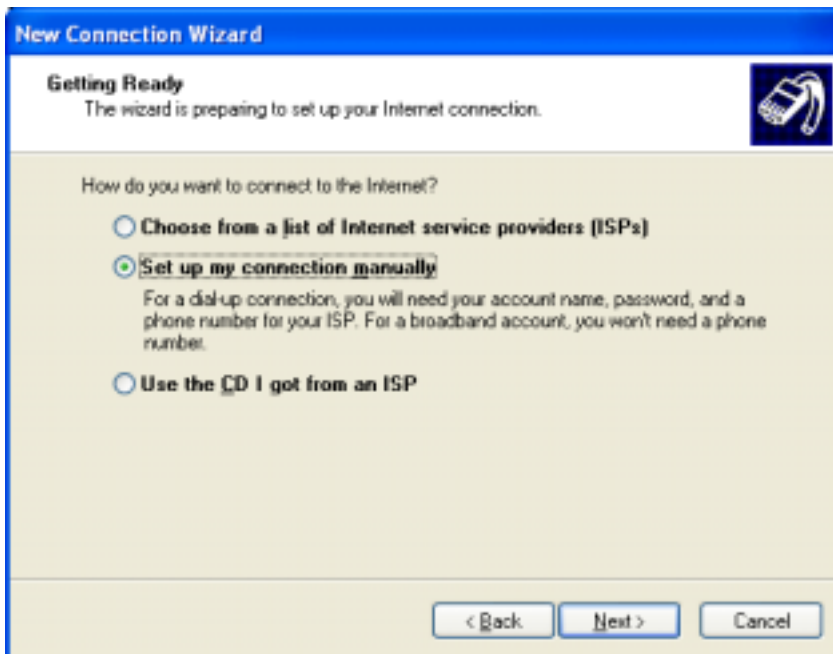
4. Under Network Tasks, click on “Create a New Connection”.



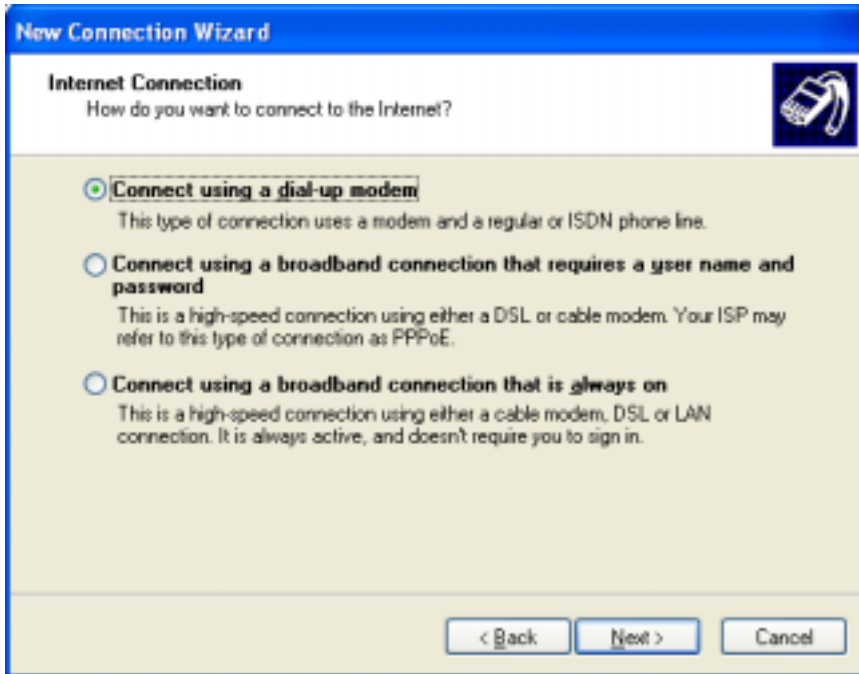
4. Click “Next”.



5. Select “Connect to the Internet” and then click “Next”



6. Select “Set up my connection manually” and then click “Next”



7. Select “Connect using a dial-up modem” then click next.



8. Type any name such as “Cahaba GBA” then click “Next”.

The screenshot shows the 'New Connection Wizard' dialog box with the title 'Phone Number to Dial'. Below the title is the question 'What is your ISP's phone number?' and a telephone icon. The main area contains the instruction 'Type the phone number below.' followed by a text box labeled 'Phone number:' containing the number '12059888282'. Below the text box is a note: 'You might need to include a "1" or the area code, or both. If you are not sure you need the extra numbers, dial the phone number on your telephone. If you hear a modem sound, the number dialed is correct.' At the bottom are three buttons: '< Back', 'Next >', and 'Cancel'.

9. Type the phone number. For Medicare outside the state of Alabama, the number is (205) 988-8282. Then click “Next”.

The screenshot shows the 'New Connection Wizard' dialog box with the title 'Internet Account Information'. Below the title is the instruction 'You will need an account name and password to sign in to your Internet account.' and a telephone icon. The main area contains the instruction 'Type an ISP account name and password, then write down this information and store it in a safe place. (If you have forgotten an existing account name or password, contact your ISP.)' followed by three text boxes: 'User name:' containing 'username', 'Password:' containing '*****', and 'Confirm password:' containing '*****'. Below the text boxes are three checkboxes, all of which are unchecked: 'Use this account name and password when anyone connects to the Internet from this computer', 'Make this the default Internet connection', and 'Turn on Internet Connection Firewall for this connection'. At the bottom are three buttons: '< Back', 'Next >', and 'Cancel'.

10. Enter your Cahaba GBA User name and password. Uncheck all of the boxes, then click “Next”.



11. If you want a Shortcut on the desktop, select the box and click “Finish”.